

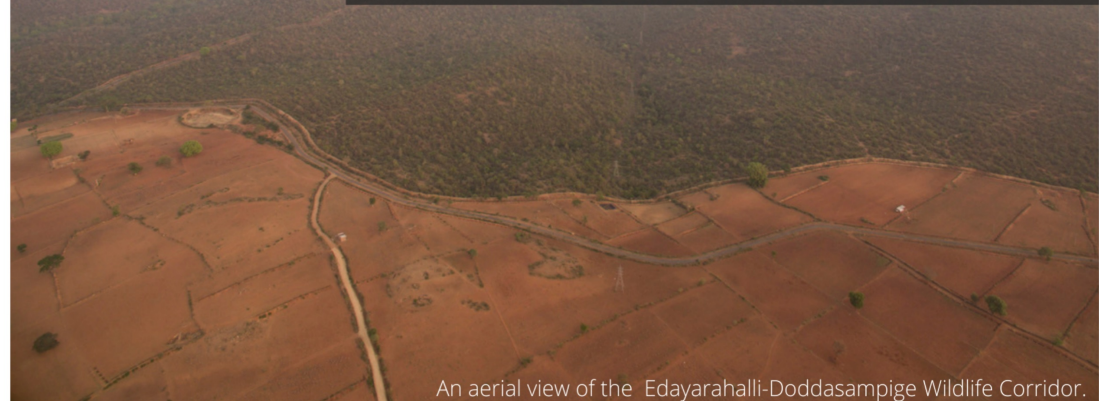
BRL2022-70 MAKES A REAPPREANCE!



BRL2022-70, a male, melanistic leopard was first captured in the Forest Department's camera traps in BRT in August 2020. It was later camera trapped in the adjoining PG Palya Range of MM Hills Wildlife Sanctuary in December 2020. However, we had found no trace of him since.

Until we started camera-trapping in Biligirirangaswami Temple Tiger Reserve (BRT) in Karnataka this May, and one image in particular caught our attention. The leopard, now about 6 years old, had reappeared in the Byluru Range of BRT Tiger Reserve.

A CASE FOR CORRIDORS.



An aerial view of the Edayarahalli-Doddasampige Wildlife Corridor.

The fact that the leopard is found in the same region for over 2 years signifies that BRT is proving to be a suitable and healthy habitat for it. But a more important insight is the necessity of the notification and conservation of wildlife corridors, as BRT and MM Hills Wildlife Sanctuary are connected by the 1.7km long Edayarahalli-Doddasampige Wildlife Corridor.

At present, the Kollegala-Hasanur Road (State Highway 38) passes through this narrow wildlife corridor causing a threat to the wildlife in the region due to the vehicular traffic, obstruction of movement of large mammals, and potential of human-wildlife conflict in the area.

Since 2017, our team of researchers has been working on monitoring animal movement in crucial locations that can be identified as wildlife corridors. Involving different stakeholders to help generate awareness about wildlife corridors and finding ways to regulate traffic at wildlife crossings has been an important aspect of our outreach work.