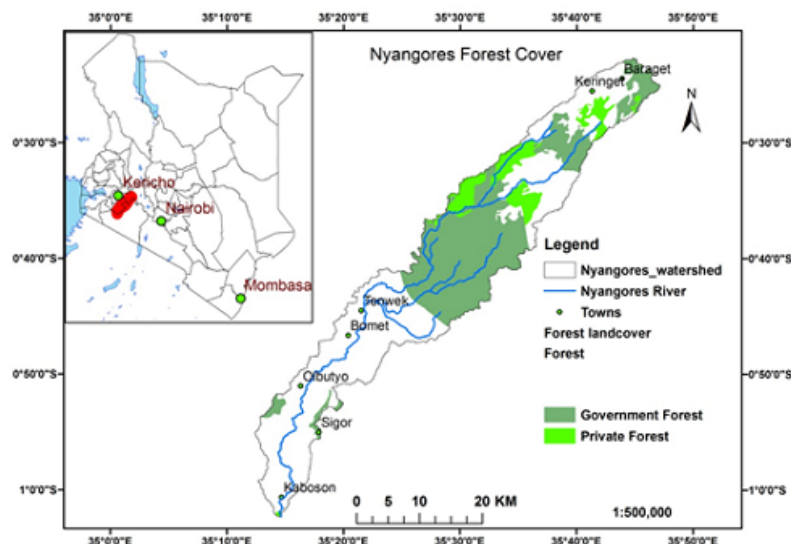


## Project Update: December 2015

1. Identification and mapping of forest resources: Mapping surveys of major non-government owned forest within the sub-catchment was conducted with the help of WRUAs and 15 volunteers. The survey was completed and was a success. A total of 12 major private forests were mapped (figure 1). The mapped forests were included in an atlas of the forests and water resources of the Nyangores sub-catchment for use by environmental institutions, government agencies and schools in the area.
2. Development of indigenous knowledge base for the catchment conservation: The project team conducted three group discussion sessions on indigenous knowledge with the community. These discussions targeted the elders, women, and the youth and government officials both within and outside the catchment. The information from these discussions were captured and included in booklets and pamphlets for consumption by local schools and institutions. However, the targeted number of booklets and brochures targeted could not be achieved due to unforeseen increased cost constraints. Only 2/3 was produced.
3. Promotion of non-riparian commercial woodlots establishment was done after extensive consultation with relevant stakeholders. The seedlings are expected to be ready for transplanting anytime between December 2015 and March 2016.

## Pictures and Images for the Project Activities

1. Mapped Forest cover of the Nyangores sub-catchment. The mapping exercise showed that major private forests are based in the upper catchment where private timber companies such as Timsales Co., and the tea factories have planted exotic tree species for timber production. However, the area is now interspersed with several illegal settlement schemes which make it hard to expand the private forests territory. The downstream area has limited major forests, however over 50 private woodlots exists (Figure 1).



- Commercial wood (Eucalyptus) prepared for sale (1m x 1m), one cube fetches up to **Kshs. 2,800** or **£ 19**. The objective of the established private commercial woodlots is to help improve household income from wood harvesting as well prevent destruction of forests in sensitive areas such as riparian land as well as in areas of abundant spring water origins. December 2014.



- Meeting with downstream elders during the deliberations for the indigenous knowledge forum, August, 2015.



- An established commercial woodlot next to the River Nyangores (in the background). June 2014.





5. Focus group discussions with government representatives in Londiani, Upper River Nyando Basin Catchment (which shares Mau catchment with the Mara and Nyangores Rivers), during a meeting to compare notes on effective catchment management practices. County Commissioners office, Londiani District. July 2015.



6. Left - Meeting with women groups January 2015. Right - Outreach at Silibwet Market, August, 2015.



7. Tree nursery Established at Norigwet Pri. School

