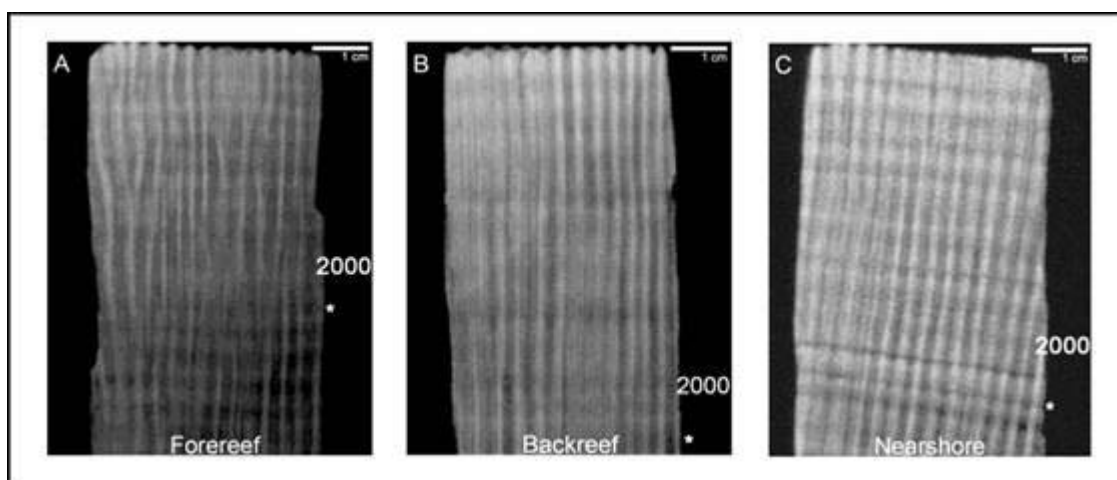


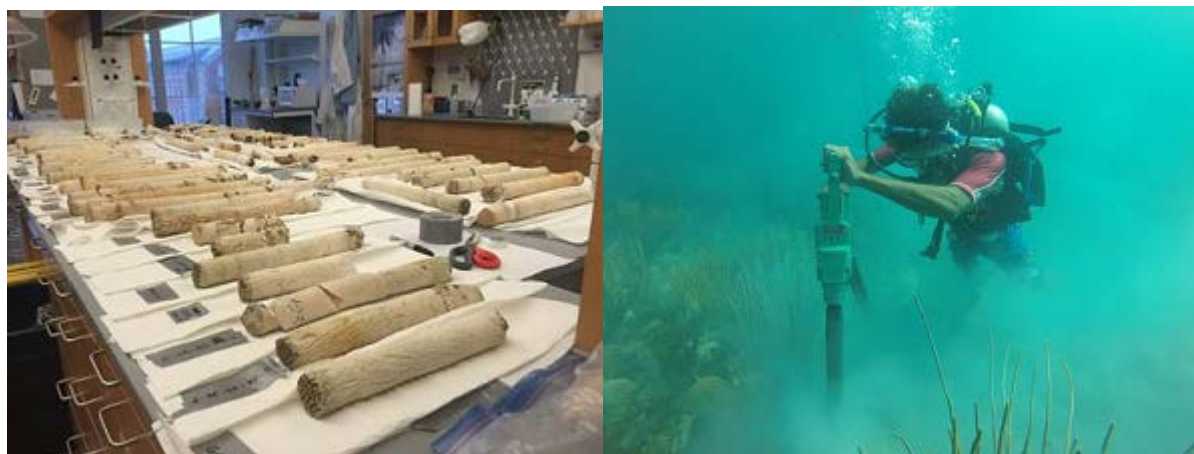
## Project Update: January 2016

In November 2015, my team and I travelled to Belize to collect coral cores from various location along the reef. We aim to investigate the impact of temperature and local stress on the growth and calcification ability of corals by measuring annual growth bands inside of each coral. This week our cores arrived from Belize (after a month long shipping debacle). In order to analyse the cores we must first CT scan them, which we plan to do starting next week. Over the next few months we will be scanning them and analysing data. Stay tuned to see what the results show.

In the meantime, a pre-print of the report from my first Rufford Small Grant is now available (<http://biorxiv.org/content/early/2016/01/14/036400.article-info>)



Example CT images of corals (Credit Dr. Karl Castillo)



Left: Coral cores collected from Belize in 2015. Right: TIDE (Belize) community researcher Curtis Hines drilling a coral core.