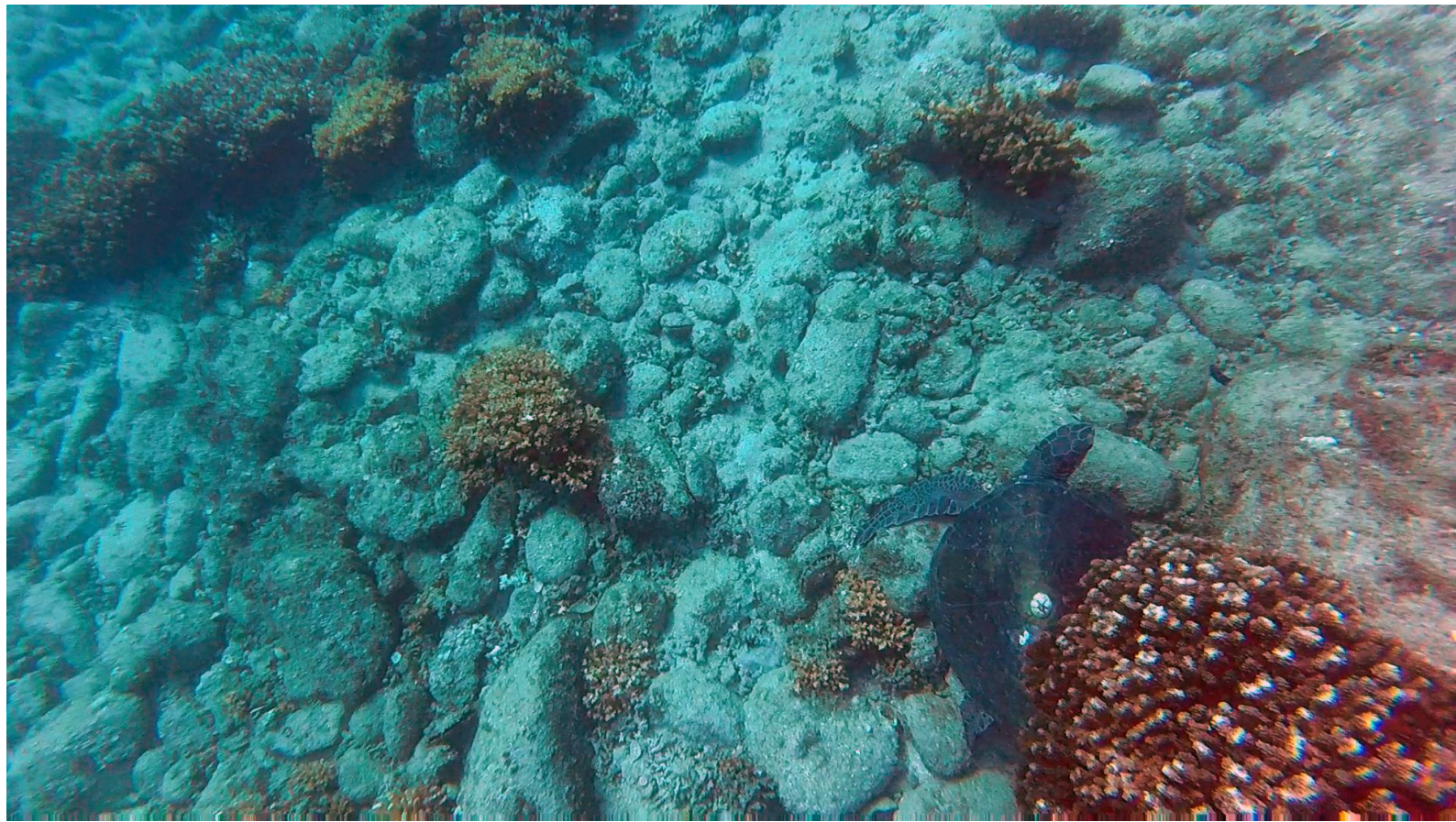


Rufford 2016-2017

Mid Term Report

Building Capacity for a Community-Based
Marine Turtle Conservation Model

Booster Grant Recipient: Stephanie J. Rousso



Marine Turtle Snorkel Monitoring surveys are a passive, non-invasive method to monitor sea turtles by their unique identifications using barnacle assemblage and shell markings.



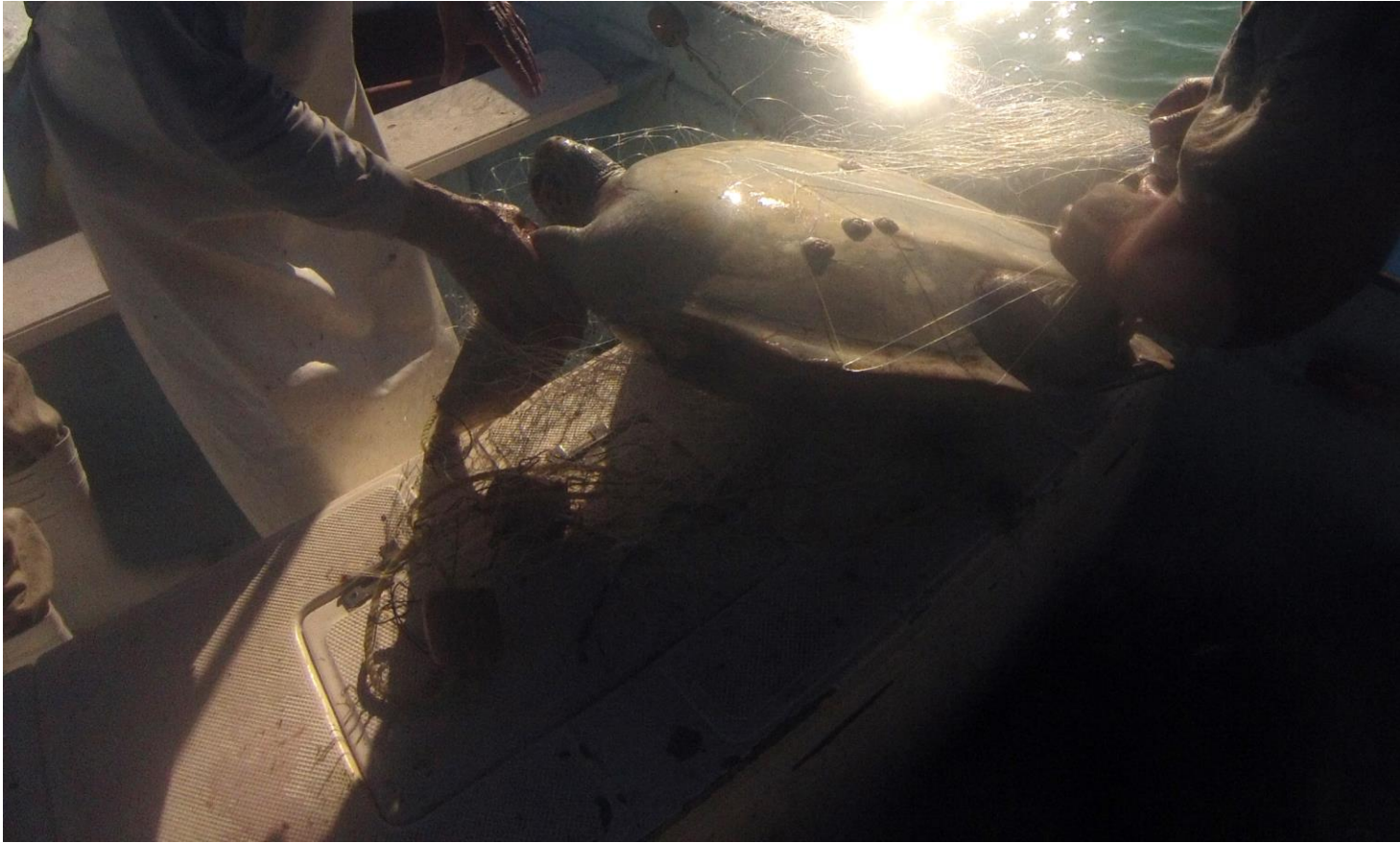
Turtles Identified by unique markings.
Using GoPro videos, we can capture still
photos like these and recruit volunteers
to “clean up” photos using their
PhotoShop software for digital analysis.





Capture surveys are funded by matching funds from the Federal Mexican Endangered Species Program (PROCER). RSG funds are being directed to passive, non-invasive monitoring surveys using GoPro camera and extension poles for monitoring (Previous pages).





Barnacles, algae, and sloughed shell fragments are collected from captured turtles for use in near future isotope analysis to determine what habitat and region individual turtles have been feeding/ living for the previous years. This helps identify high priority conservation habitats.



Epibionts (attached marine organisms) were collected that have never been documented previously and better understanding of fidelity of feeding sites can be gained by the coverage of certain marine algae on critically endangered species such as the hawksbill below:





We are continuing our conservation tourism program with ASUPMATOMA, the nest monitoring camp in Los Cabos.



Outreach is a key element of my project and in just the past 3 months, over 80 participants, including students, tourism professionals, and sailboaters have attended our workshops and accompanied me on passive snorkel monitoring surveys.



Sea turtles released unharmed and safe from volunteers participating in our Citizen Science Sea Turtle Spotter program. This program was funded by Pacsafe travel gear and Oceanic Society as matching funds and RSG booster grant is used to develop a monthly outreach campaign to raise awareness for the program and review data with students.



Stranding workshop and beach monitoring with students and residents

Next steps for 2017:

Partner with organizations working to identify and protect migratory corridors in the Eastern Tropical Pacific and provide research findings of high priority habitat use, and work with more sport fishing groups like the fleet of over 30 fishing boats below in Los Barriles.



© Michael Horrell

MOVEMENTS AND CONNECTIVITY OF MIGRATORY SPECIES IN THE EASTERN PACIFIC



MigraMar

MARINE PROTECTED AREAS

GALAPAGOS SHARK	GREEN SEA TURTLE
HUMPBACK WHALE	TIGER SHARK
WHALE SHARK	SILKY SHARK
LEATHERBACK TURTLE	SCALLOPED HAMMERHEAD

www.migramar.org

Designed
by
ANALIA