



Universidad
Nacional
de Córdoba

I M B I V

August , 2024 Córdoba, Argentina

Progress Report

Effects of subsistence hunting on wildlife: An analysis of human/wildlife relationships in northern Córdoba, Argentina. Matías Wajner (ID 40591-1)

Instituto Multidisciplinario de Biología Vegetal, Universidad Nacional de Córdoba,
CONICET, Argentina

In this project, I seek to determine the richness of hunting animals and make a comprehensive assessment of the state of human-wildlife relations in the arid Chaco region of Argentina. The aim is to evaluate the potential threats to local wildlife and analyze specific conservation actions together with the local community. To achieve these objectives, I am implementing various mechanisms that allow access to diverse and complex information. I have placed camera traps, conducted structured interviews about the presence of medium and large terrestrial vertebrates in the area, and am performing in-depth ethnographic work with continuous presence in the field. This includes gathering information about the cultural value of hunting species and gaining knowledge about the wildlife currently being hunted. I also participate in social activities not directly related to wildlife to learn about local practices, values, and customs (see Appendix 2).

Since mid-2023, I have been conducting extensive work that has so far totaled 108 days of fieldwork. During this period, I have interacted with local residents to show them how to use camera traps, organized knowledge exchange workshops, and shared many valuable moments of interaction (see photos in Appendix 2). Additionally, I have collected photos from 52 camera trap stations, accumulating 1,743 trap days. I have interviewed 34 local residents regarding the presence or absence of animals listed in the literature.

I characterized the assemblage of medium and large terrestrial vertebrates expected to be present in the area according to the literature. Fieldwork has allowed me to compare these expectations with actual findings from camera trapping and interviews, establishing a baseline of medium and large terrestrial vertebrates present in the territory (Appendix 1). Initial conclusions indicate that only two species expected to be in the territory are absent: Patagonian Mara and Red-legged Seriema. However, I have gathered evidence of other species not previously known to inhabit the area: Southern Tamandua (evidence obtained through an interview, see Appendix 2-Img1; Wajner et al. 2024), Capybara (evidence obtained through an interview, see Appendix 3-Img2; Wajner et al. 2023), Chacoan Peccary (evidence obtained through interview and camera trapping, see Appendix 2-Img3 and 4, publication in progress), Maned Wolf, and Neotropical Otter (reported by local residents, but without evidence of presence).

Furthermore, based on ethnographic information and questions posed to local residents, I have collected data on the medium and large wild animals that are hunted. Through extensive fieldwork, I have documented 96 hunting events conducted by local residents. This information has revealed which animals are being hunted in the area. The field data have contributed to reflections on the multiple motives for hunting (see Tamburini et al. 2024) and the contrasting moral and ethical notions associated with hunting among different social actors (See conference presentation sent as an attachment - Wajner and Zamudio 2024).

Currently, information continues to be collected through the aforementioned methods to both strengthen the results and identify the most hunted animals in the area. Additionally, others workshops are being prepared with local residents to discuss wildlife and potential conservation issues. Coordination is also underway with the local school teacher to develop educational materials about the medium and large terrestrial vertebrates present in the study area.

The support of the Rufford Foundation has been crucial for carrying out this process, both in purchasing materials such as camera traps, camping equipment, and a computer, as well as for conducting fieldwork, paying for conference registration fees, and covering publication costs.

Matías Wajner
Laboratorio de Interacciones Ecológicas y Conservación
Instituto Multidisciplinario de Biología Vegetal
IMBIV - CONICET
FCEfyN - Universidad Nacional de Córdoba
Av. Vélez Sarsfield 299, 2° piso. CP: 5000
Córdoba, Argentina
Phone: (54)- 035-433 1056/2104 - ext. 29
Email: mwajner@imbiv.unc.edu.ar

Bibliography

2024. Tamburini, D. M., Zamudio, F., Wajner, M., & Manzano-García, J. Dimensiones de las cacerías de fauna silvestre en el Chaco Argentino: reseña y reflexiones pendientes. En: Juan Martín Dabezies y Santiago M. Cruzada (Eds). *Cazando en Iberoamérica: polisemias cinegéticas del mundo contemporáneo*. Tirant Lo Blanch (editorial).

2023. Wajner, M., Merlo, F., Laitán, G., Campos, S., Rueda, M., Rueda, C., Britos, A. H., & Zamudio, F. *Hydrochoerus hydrochaeris* (Linnaeus 1766) en el Chaco Árido. Registros novedosos y reflexiones sobre una especie semi-acuática en expansión. *Notas Sobre Mamíferos Sudamericanos*. SAREM, 2024, vol. 6 DOI:<https://doi.org/10.31687/SaremNMS24.01.5>Versión on-line ISSN 2618-478

2024. Wajner, M., Merlo, F., Argibay, D., Orona, M., Campos, S., & Zamudio, F. Nuevos registros confirman la presencia del Oso Melero (*Tamandua tetradactyla*) en el centro y sur de la provincia de Santiago del Estero. *Notas Sobre Mamíferos Sudamericanos*. SAREM, 2024, vol. 6 DOI: <https://doi.org/10.31687/SaremNMS24.06.3>Versión on-line ISSN 2618-4788

APPENDIX 1

Class	Order	Common name	Scientific name	conservation status global - local	present according to bibliography	Present based on interviews	Photographed by camera traps	Hunted species
Mammalia	Didelphimorphia	White-eared Opossum	Didelphis albiventris	LC - LC	x	x	-	-
	Pilosa	Southern Tamandua	Tamandua tetradactyla	LC - EN	-	x	-	-
	Cingulata	Screaming Hairy Armadillo	ChaetophRACTUS vellerosus	LC - LC	x	x	x	x
		Large Hairy Armadillo	ChaetophRACTUS villosus	LC - LC	x	x	x	x
		Chacoan Naked-tailed Armadillo	Cabassous chacoensis	NT - EN	x	x	-	x
		Southern Three-banded Armadillo	Tolypeutes matacus	NT - NT	x	x	x	x
	Lagomorpha	European Hare	Lepus europaeus	EXOTIC	x	x	x	x
	Rodentia	Patagonian Mara	Dolichotis patagonum	NT - EN	x	-	-	-
		Conejo del palo	Dolichotis salinicola	LC - EN	x	x	x	x
		Capybara	Hydrochoerus hydrochaeris	LC - EN	-	x	-	x
		Plains Viscacha	Lagostomus maximus	LC - VU	x	x	x	x
	Carnivora	Pampas Cat	Leopardus colocola	NT - EN	x	x	x	-
		Geoffroy's Cat	Leopardus geoffroyi	LC - VU	x	x	x	-
		Jaguarundi	Herpailurus yagouaroundi	LC - VU	x	x	x	-
		Puma	Puma concolor	LC - VU	x	x	x	x
		Maned Wolf	Chrysocyon brachyurus	NT - EN	-	x	-	-
		Pampas Fox	Lycalopex gymnocercus	LC - LC	x	x	x	x
		Molina's Hog-nosed Skunk	Conopatus chinga	LC - LC	x	x	x	-
		Lesser Grison	Galictis cuja	LC - NT	x	x	x	-
		Neotropical Otter	Lontra longicaudis	NT - EN	-	x	-	-
	Cetartiodactyla	Chacoan Peccary	Catagonus wagneri	EN - CR	-	x	x	x
		Collared Peccary	Pecari tajacu	LC - EN	x	x	x	x
		Gray Brocket	Mazama gouazoubira	LC - VU	x	x	x	x
		Jabali	Sus scrofa	EXOTIC	x	x	x	x
Reptilia	Testudines	Chaco Tortoise	Chelonoidis chilensis	VU - VU	x	x	-	x
	Squamata	Red-tailed Boa	Boa constrictor occidentalis	LC - EN	x	x	-	x
		Red Tegu	Salvator rufescens	LC - LC	x	x	x	x
Aves	Rheiformes	Greater Rhea	Rhea americana	NT - VU	x	x	x	x
	Tinamiformes	Inambues	Nothura spp. O nothoprocta spp.	-	x	x	x	-
		Elegant Crested Tinamou	eudromia elegans	LC - LC	x	x	x	x
	Gruiformes	Black-legged Seriema	Chunga burmeisteri	LC - LC	x	x	x	-
		Red-legged Seriema	Cariama cristata	LC - LC	x	-	-	-
	Charadriiformes	Black-winged Stilt	Himantopus mexicanus	LC - LC	x	x	x	-
		Southern Lapwing	Vanellus chilensis	LC - LC	x	x	-	-
	Galliformes	Chaco chachalaca	Ortalis canicollis	LC - LC	x	x	x	-

Table 1 – The first columns present the medium and large terrestrial vertebrates, their common English name, scientific name, class and taxonomic order. The next column shows their conservation status, both internationally (IUCN) and locally (for mammals: Torres and Tamburini 2018; reptiles: Cabrera 2017; birds: MayDS 2015). Following this, an "x" marks the species expected according to the literature, those mentioned in interviews, and those photographed by camera traps, while a “-” indicates absence. Lastly, an "x" marks the species known to have been hunted during the field stay, and a “-” indicates those not hunted. In light gray, the animals found that are not expected to be in the region according to the literature are highlighted, and in dark gray, those that are mentioned in the literature but were not found in the field are marked.

Bibliography for appendix 1

2017. Cabrera, M. R. Reptiles del centro de la Argentina. Primera edición. Editorial de la Universidad Nacional de Córdoba. Córdoba, Argentina. ISBN 978-987-707-019-4.

2017. MAyDS y AA (Ministerio de Ambiente y Desarrollo Sustentable y Aves Argentina). Categorización de las Aves de la Argentina (2015). Informe del Ministerio de Ambiente y Desarrollo Sustentable de la Nación y de Aves Argentinas, edición electrónica. C. A. Buenos Aires, Argentina. XX pp

2018. Torres, R. and Tamburini D. Los mamíferos de Córdoba y su estado de Conservación. Universidad Nacional de Córdoba, Córdoba. ISBN 978-987-707-084-2

APPENDIX 2 Photograph of fieldwork.

Img 1 Photo of a puma skull presented by a local resident.



Img 2 Procession on the day of the Virgin of Mercedes.



Img 3. Local resident performing daily activities, milking a goat.



Img 4. Field recognition with local residents.



Img 5. Wild boar (*Sus scrofa*) hunting day.



Img 6. Identifying wildlife tracks.



Img 7. Preparing food at the local school.



Img 8. Workshop with local residents at the school.



Img 9. Sharing a meal at the local school.



Img 10. Viewing camera trap photos with a local resident.



Img 11. Installing a camera trap



Img 12. Local resident showing a capybara hide (*Hydrochaeris hydrochaeris*).



APPENDIX 3 Photograph of vulnerable Medium and large terrestrial vertebrates

Img 1. Southern Tamandua



Img 2. Capybara



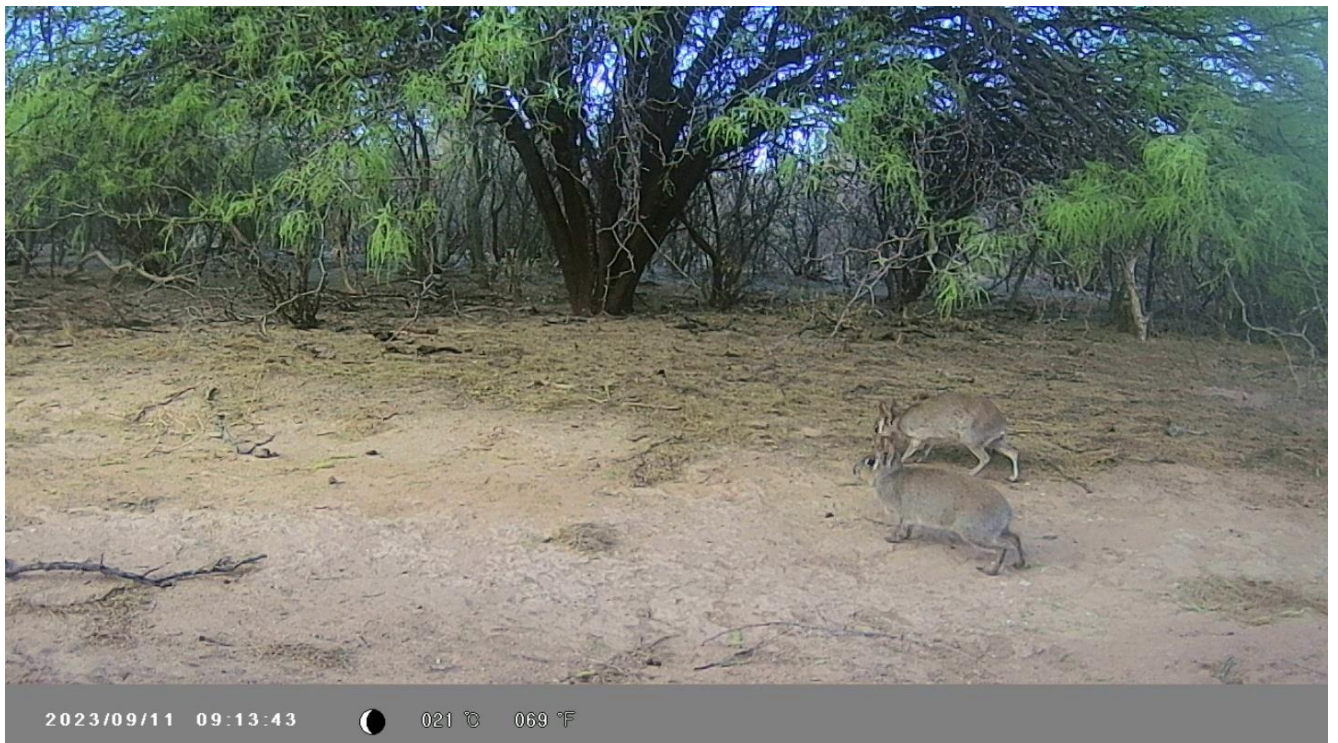
Img 3 & 4. Chacoan Peccary



Img 5. Southern Three-banded Armadillo



Img 6. Conejo del palo



Img 7. Plains Viscacha



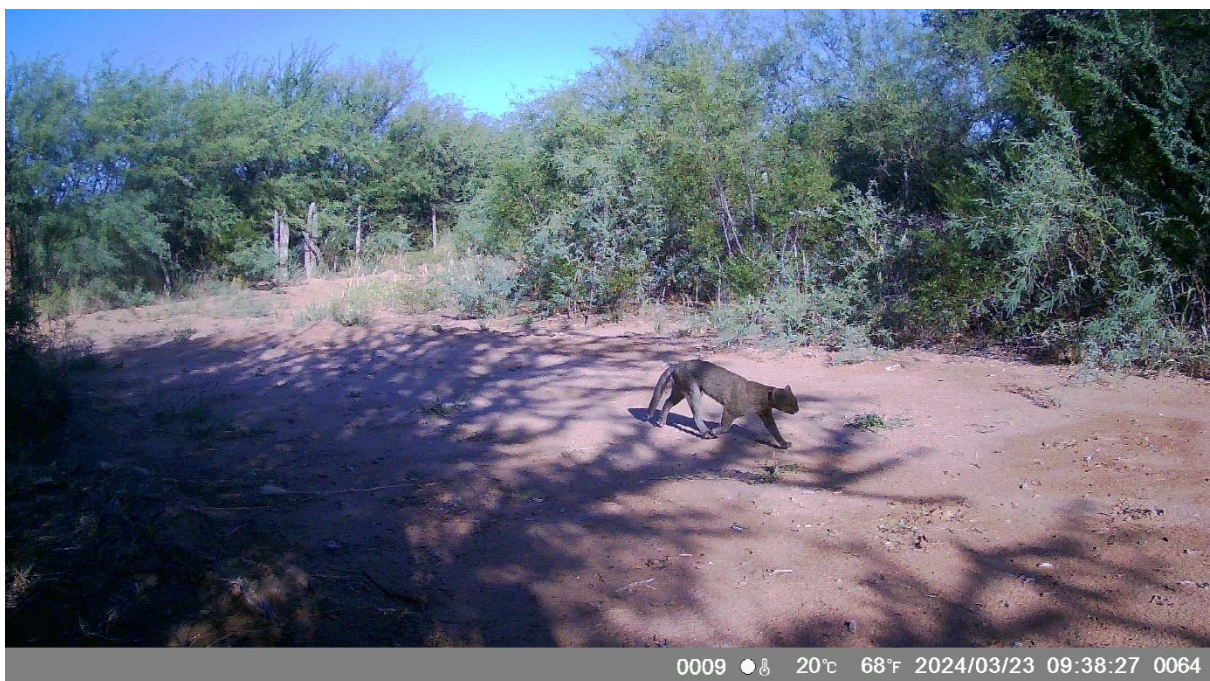
Img 8. Pampas Cat



Img 9. Geoffroy's Cat



Img 10. Jaguarundi



Img 11. Puma



Img 12. Lesser Grison



Img 13. Collared Peccary



Img 14. Gray Brocket



Img 15. Red-tailed Boa



Img 16. Greater Rhea

