

EVIDENCE AND OUTPUTS DESCRIPTION



Escorpión o Dragón Oaxaqueño, (*Abronia oaxacae*)
Endemic specie of Oaxaca
IUCN Red List Category: Vulnerable
NOM-059-SEMARNAT: Endangered

Details	
Full Name	Carlos Augusto Torres Barragán
Project Title	Biocultural Conservation through Participatory Management in Mitla-Yagul, Oaxaca, Mexico
Application ID	43605-1
Date of this Report	15 April 2025

Introduction

Mitla-Yagul Biocultural Landscape (MYBcL), in Oaxaca, Southern Mexico, is a very complex social-ecological system, comprises diverse land-tenure types, like federal, private, and mainly communal property owned by Zapotec communities (86% of the land in the MYBcL). The MYBcL has been inhabited for over 10,000 years and harbors many biocultural features, ranging from archeological evidence of some of the earliest domestication processes of biodiversity; cave art; Zapotec and Mixtec precolonial structures; to environmental features such as dry forest ecosystems, endangered and endemic species like Escorpión Oaxaqueño (*Abronia oaxacae*); and important cultural aspects, such as the longstanding presence of Indigenous peoples; local believes and knowledge systems, and traditional agricultural systems.

Although the landscape is a UNESCO World Heritage Site, where the federal government has established strict protected areas, and local communities have been active over the past decade in developing participatory conservation strategies; the biocultural heritage and biodiversity of the MYBcL faces challenges, such as the expansion of agave monocultures for the mezcal industry, urbanization, wildfires, illegal hunting, mass tourism, and customs erosion.

With this context in mind is that the project aimed to contribute to the biodiversity conservation and endangered species through an integrative approach to conservation, bringing cultural and natural aspects together, and does so in a way that involves local actors (ejidos and communities) in the knowledge and development of conservation strategies where in addition to documenting biodiversity and its threats, we have been worked to identify biocultural values and attributes at the landscape, which motivates local people to preserve it.

Main activities done during the project are: 1) Participatory management and conservation strategies were documented; 2) The main attributes and priority sites in the landscape were identified; 3) dissemination materials on biocultural heritage and biodiversity were designed and sharing with local people and key stakeholders (including governmental agencies); 4) Ampliation of voluntary conservation area of Mitla were promoted and accepted for community assembly; 5) Threats facing the conservation of biodiversity and biocultural heritage were identified and the two main were analyzed (Agave monoculture expansion and wildfires); 6) All information and products generated were integrated for generating conservation and restoration strategies via three participatory workshops (one per each community); 7) Four scientific articles had been prepared for publishing in peer-reviewed journals (1 accepted: Participatory management; 1 summited "Agave Monoculture expansion"; 1 in revision stage "Wildfires in Voluntary Conservation Areas"); and 1 in preparation stage "Community strategies to strengthen social ecological resilience through participatory restoration and conservation").

1. Documenting participatory management strategies and local strengths and challenges in biocultural heritage conservation in the MYBcL



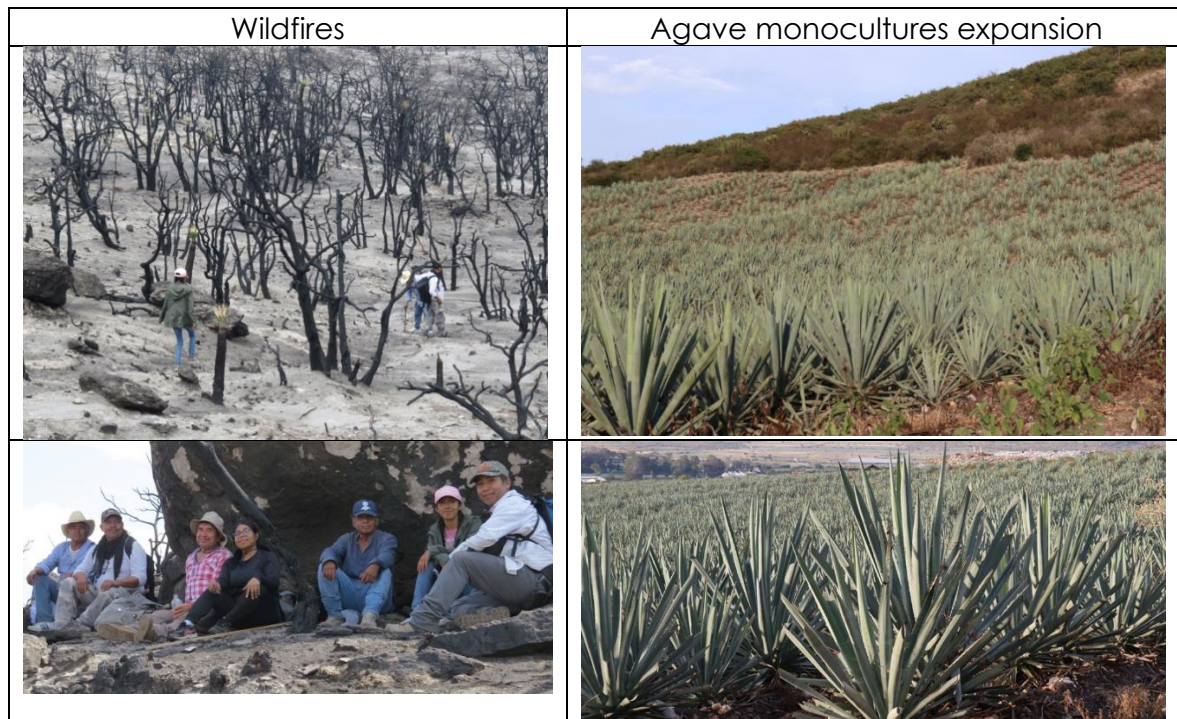
2. Supporting biocultural heritage and biodiversity conservation by identifying the main attributes and priority sites in the landscape



3. Sharing with local people dissemination materials on biocultural heritage



5. Analyze the management and the main threats and challenges facing the conservation of biodiversity and the biocultural heritage of the MYBCL



6. Developing via participatory workshops strategies for restoration and conservation in the MYBCL





Workshop with ejidatarios and comuneros of Villa de Mitla

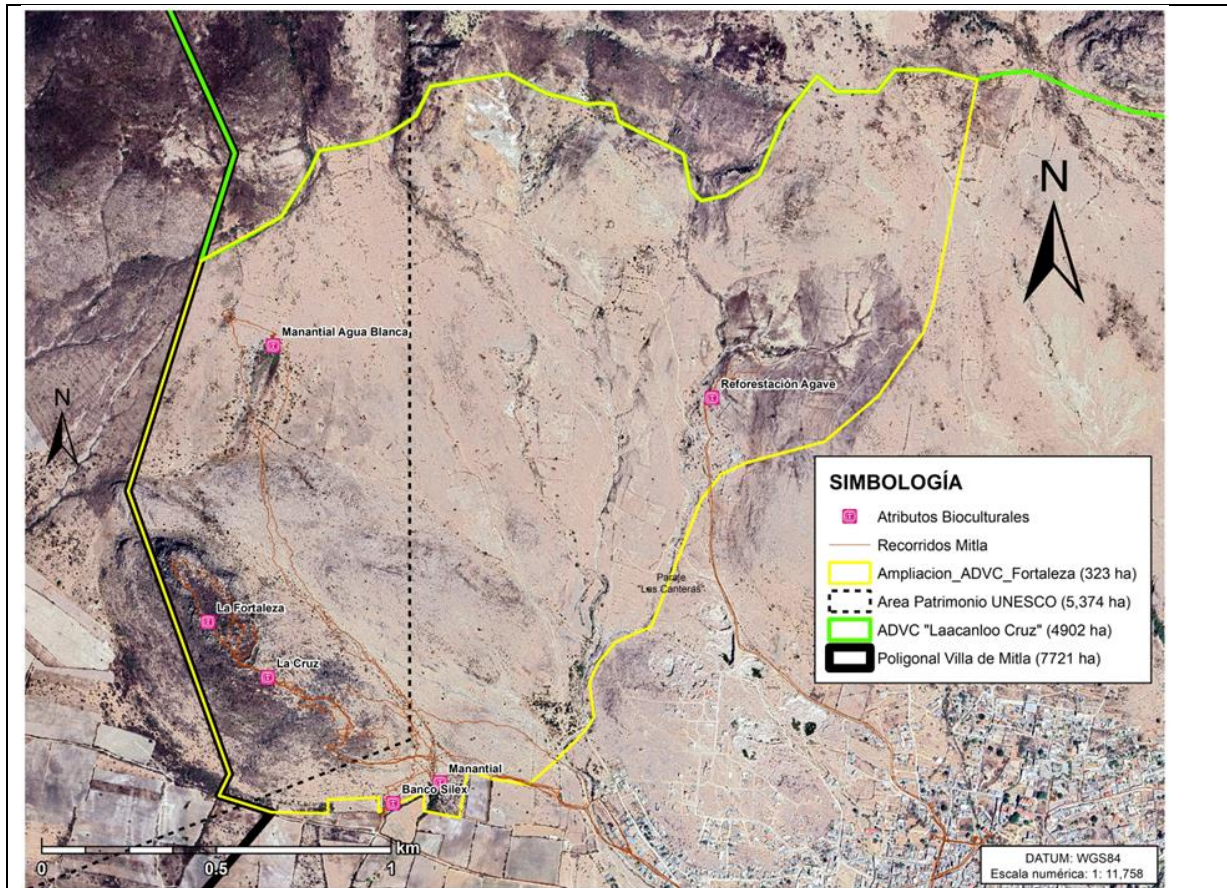


Workshop with comuneros of Villa Diaz Ordaz



Workshop with ejidatarios of Unión Zapata

7. Participatory planning and community conservation agreements for expansion of voluntary conservation areas through the collaboration of communities, researchers, and government agencies (CONANP-Comisión Nacional de Áreas Naturales Protegidas) of Mitla (figure #) and Ejido Villa Diaz Ordaz.



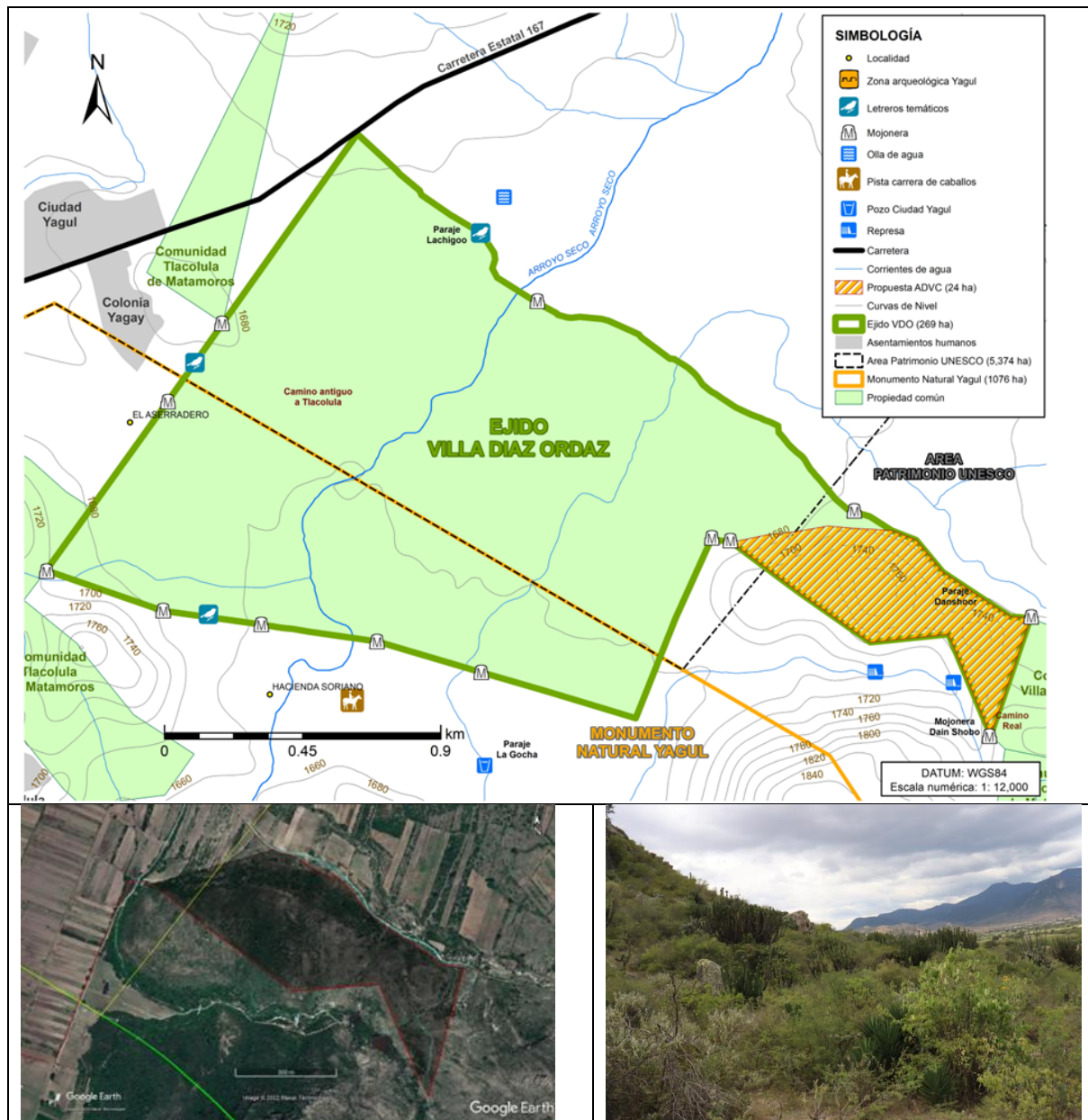
Expansion of voluntary conservation area of Mitla "Laacanoloo Cruz" (Miracles' cross / Ancient Bell Tower) with 323 hectares to protect biocultural values like Mitla Fortrees and springs.



"Agua Blanca" spring



Mitla Fortrees



Area for certification of voluntary conservation area of Ejido Villa Diaz Ordaz with 24 hectares.

8. Dissemination material and certificate for workshop participants

A) Project logo



PAISAJE BIOCULTURAL
MITLA | UNIÓN ZAPATA | DÍAZ ORDAZ | YAGUL



PAISAJE BIOCULTURAL
MITLA | UNIÓN ZAPATA | DÍAZ ORDAZ | YAGUL

B) T-shirts for workshop participants and implementation team



C) Backpack for workshop participants and implementation team



D) Notebooks for workshop participants and implementing team



E) Certificate for workshop participants and implementing team



F) Advertising banner displayed at the state agrobiodiversity fair

PAISAJE BIOCULTURAL
MITLA | UNIÓN ZAPATA | DÍAZ ORDAZ | YAGUL

9,038 HECTÁREAS COMO ÁREAS DESTINADAS VOLUNTARIAMENTE A LA CONSERVACIÓN (ADVC), DONDE PROTEGEN MÚLTIPLES VALORES BIOCULTURALES.

13 años han trabajado para cuidar su patrimonio biocultural, pero en mayo de 2024 se quemó el 40% de su bosque. Ahora además de cuidarlo tienen que restaurarlo. La tarea es grande y necesitan aliados.
¡TU PUEDES SER UNO DE ELLOS!

CONAR Rufford UNIVERSITY OF SASKATCHEWAN IDEAS WILD CONANP

G) Advertising banner for study communities at the state agrobiodiversity fair.

VILLA DE MITLA
ADVC "El Campanario-Laacanol Cruz" (4,902 ha)
13 años cuidando su patrimonio biocultural
¡TU PUEDES CONTRIBUIR!

UNIÓN ZAPATA
ADVC "El Fuerte" (988 ha)
13 años cuidando su patrimonio biocultural
¡TU PUEDES CONTRIBUIR!

VILLA DÍAZ ORDAZ
ADVC "Danii Idoo Cerro Iglesia" (3,148 ha)
11 años cuidando su patrimonio biocultural
¡TU PUEDES CONTRIBUIR!

PAISAJE BIOCULTURAL MITLA | UNIÓN ZAPATA | DÍAZ ORDAZ | YAGUL CONAR Rufford UNIVERSITY OF SASKATCHEWAN IDEAS WILD CONANP