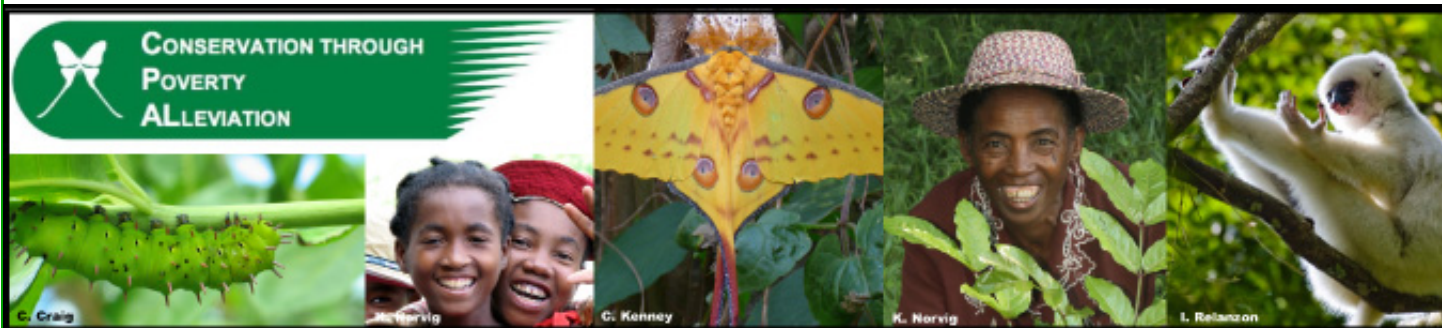


Having trouble viewing this email? [Click here](#)



CPALI/SEPALI Madagascar Newsletter

December 2012

Pupae for Protein (P4P)



The weight of 1 Red-Ruffed Lemur = the weight of 4000 pupae with a by-product of 1 kilo of cocoons

Madagascar has the highest prevalence of malnutrition in the Southern African Development Community. According to the World Food Programme, over 50% of Malagasy children under age 3 suffer impaired growth because of a chronically inadequate diet. In 2013 we will be introducing our new Pupae for Protein (P4P) initiative to extend the impact of our existing project, the agricultural production of wild silk, to the agricultural production of pupae for food. Silkworm pupae are a by-product of our program and could be a sustainable source of protein for Malagasy families. Insects are a traditional food in Madagascar and are particularly important in rural communities during the lean period. Farmers who produce 4000 cocoons (1 kilo) can provide about 4 kg of protein to their children, the equivalent of one red-ruffed lemur, a highly endangered species previously hunted in the Makira Protected Area from which farmers have been displaced. Edible pupae could provide additional income as well as food. For example,

In This Issue

News from the Field
Holiday suggestion



II



Give Now

[Save a forest by fighting childhood anemia](#)

[Join Our Mailing List!](#)

six species of sun-dried Saturniidae larvae sold in Zambian markets in 2003 yielded \$52/11.5 kg thereby returning greater profits than other types of agriculture produce.

P4P is a new, innovative program to address the high rate of childhood anemia in our area and enhance food security in one of the poorest countries in the world. We hope you will consider giving an end of the year donation to CPALI and help us get P4P on the table (so to speak)!

News from the Field:

It is a very busy time for the team and all are looking forward to a well deserved winter break. Eddie, Kerry and Lydiah Gatere (a collaborating scientist from Cornell) have been sampling soils in the communities leaving Mamy and Mario back at the ranch to grind previously collected soils and prepare them for shipping. We can't wait to finally collect some environmental data and be able to monitor the effect, if any, of the silk moth host plant on soil quality and retention. Thank you to Cornell's Atkinson Center for a Sustainable Future for making this happen! On top of soil grinding, the team also just moved 200 trees from our previous demonstration site to our new demonstration site - lots of tired muscles looking for a break!

David Janka, Professor from Stanford's Design for Extreme Affordability course just visited the team in Maroantsetra to pave the way for 2-4 graduate students who are arriving in March. The SEPALIM team put together a wish list of technical and design problems they need to solve that range from automating the sewing process to allow production of new textile patterns to designing and marketing new products to eluting caterpillar poop from the cocoons! We are excited about possible solutions that the Stanford team may come up with as well as suggestions for future project products.

Marketing update

While production volume is still low we are happy to report continued interest from US, Australian and European buyers to purchase our beautiful non-spun textile. We are hoping the added caterpillar market will encourage farms to produce more cocoons - rearing season is on now and the count will be in, in January!

Rikki Moss of Studio Glow is working with the textile to design a fabulous light or chandler - be sure to check out her website: www.studio-glow.com.

Don't forget to visit www.wildsilkm Markets.com for holiday ideas or to order a special curtain or shade.

Its been an exciting year from 125 farmers to almost 300, from new species of silk caterpillars to spun thread, from international markets to local markets and a fight against childhood anemia and topping off with a new collaboration with Stanford! We are extremely grateful for your support in 2012 and hope that you will consider giving a donation to CPALI/SEPALIM for 2013.

Happy Holidays and let the adventure continue!



Catherine Craig, PhD
CPALI President

We welcome your suggestions and comments - please contact me at: or suggest additional products or markets, please contact ccraig "at" cpali "." org or Mamy Ratsimbazafy at Mamycpali.gmail.com.

Donations can also be gratefully accepted and acknowledged through Global Giving (<http://www.globalgiving.org/projects/help-farmers-produce-silk-and-enhance-nutrition/>) but if you would like a special piece of our silk be sent as a gift, please make a donation of \$100 or more by sending a check to: CPALI, 221 Lincoln Road, Lincoln, MA 01773.

[Forward email](#)



This email was sent to ccraig221@gmail.com by ccraig@cpali.org | [Update Profile/Email Address](#) | Instant removal with [SafeUnsubscribe™](#) | [Privacy Policy](#).

CPALI | 221 Lincoln Road | Lincoln | MA | 01773