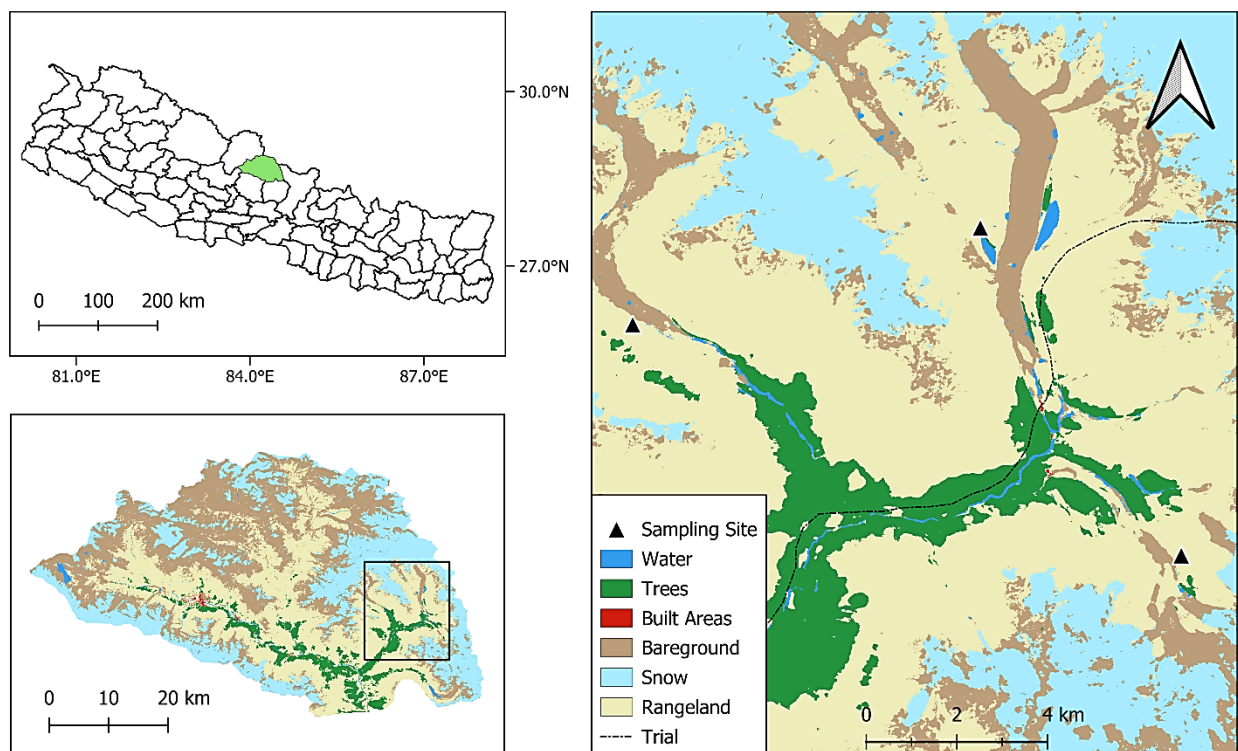


**Project Title:** Ecological Study and Conservation Approaches of the Threatened Medicinal Plant: Yellow Himalayan Fritillary (*Fritillaria cirrhosa*) in the Trans-Himalayan Region

In July-August 2025, we successfully completed the initial field survey following approval from the Department of National Parks and Wildlife Conservation (DNPWC) and Nason Municipality, Manang District. With support from our local collaborator, three sampling sites were identified for detailed study (**Figure 1**). Preliminary observations indicated a sparse distribution of *Fritillaria cirrhosa* in these Himalayan regions.

An ethnobotanical survey was also conducted in Tilche, Gowa, and Bhimthang to assess local perceptions of the species' conservation status and traditional uses. A total of 52 households were interviewed. Communities demonstrated strong enthusiasm and cooperation, actively sharing their knowledge and expressing genuine interest in contributing to the conservation of this threatened medicinal plant.



**Figure 1:** Map showing the locations of the three sampling sites in Manang District, Nepal.



**Figure 2:** *Fritillaria cirrhosa* growing in its natural alpine habitat (Plensi, Manang, Nepal, 3700m)



**Figure 3:** Community members in Bhimthang engaged in an awareness session on the conservation of *Fritillaria cirrhosa*. (Photographed by Ramesh Dhimi)





**Figure 4:** Community discussion with locals in Chunglee Kharka (*Photographed by Ramesh Dhami*)



**Figure 5:** Gita Devi Gurung, a local resident of Bhimthang, engaging in a discussion. (*Photographed by Ramesh Dhami*)





**Figure 6:** Community discussion with locals in Bhimthang (Photographed by Ramesh Dhami)



**Figure 7:** An elderly couple from Tilche displaying their collection of *Fritillaria cirrhosa* bulbs.





**Figure 8:** Local participants engaged in an ethnobotanical survey in Tilche. (*Photographed by Sulochan Gyawali*)



**Figure 9:** Local participant engaged in an ethnobotanical survey in Tilche.



**Figure 10:** Local participant engaged in an ethnobotanical survey in Tilche. (*Photographed by Sulochan Gyawali*)